



Artful & Textured |



CHARCOAL / GRAPHITE / INK

GRAPHITE + INK in color 570

ARTFUL & TEXTURED



CHARCOAL in color 525 / installation in monolithic

ARTFUL & TEXTURED



GRAPHITE in colors 430 and 590 / installation in ashlar

ARTFUL & TEXTURED

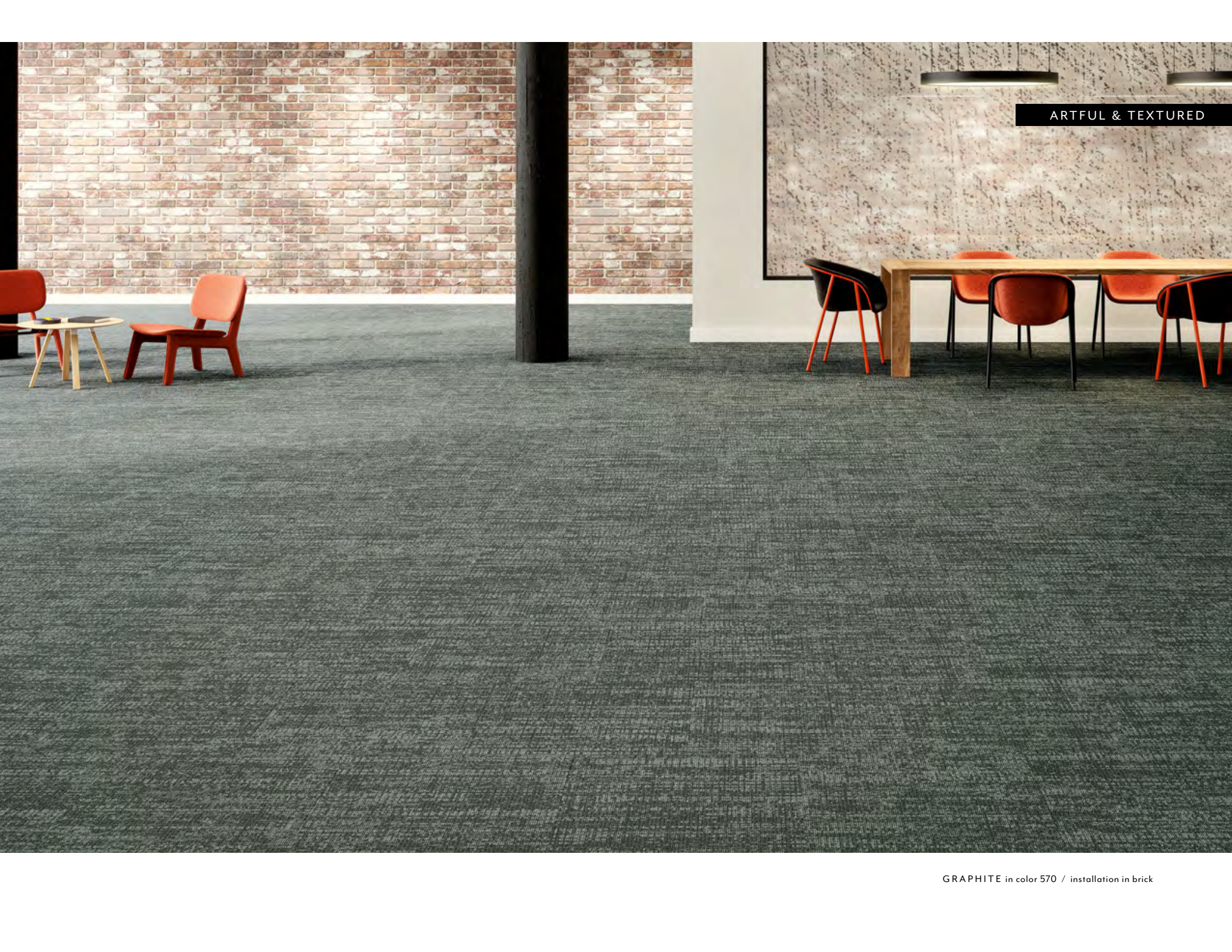


ARTFUL & TEXTURED



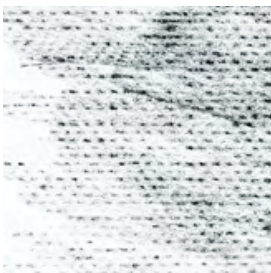
INK in color 430 / GRAPHITE in color 590
installation in brick





ARTFUL & TEXTURED

ARTFUL & TEXTURED



GRAPHITE in french grey

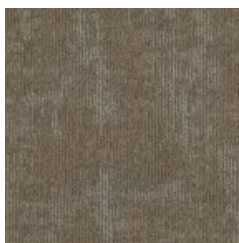


ARTFUL & TEXTURED



CHARCOAL loose lay area rug in color 430 /
with LOCAL RESERVE in color 05113

COLORWAYS 10574 | CHARCOAL



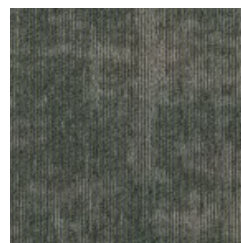
00150 sand



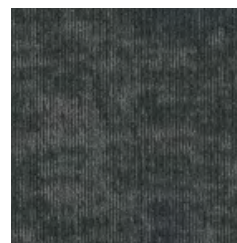
00525 french grey



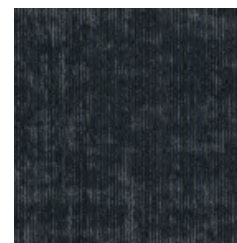
00700 umber



00390 celadon



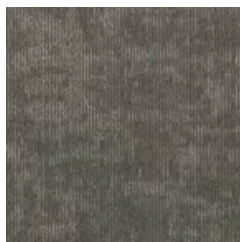
00430 slate



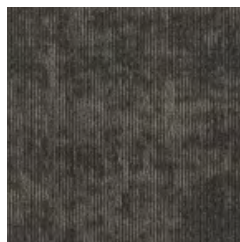
00450 indigo



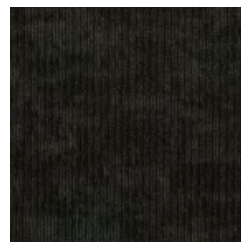
00570 cool grey



00530 silver



00560 warm grey



00590 black

COLORWAYS 10575 | GRAPHITE



00150 sand



00525 french grey



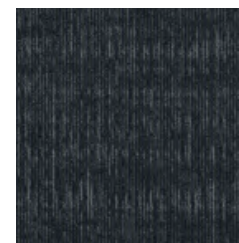
00700 umber



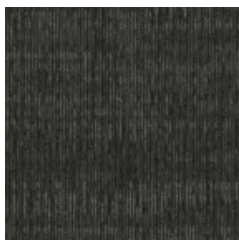
00390 celadon



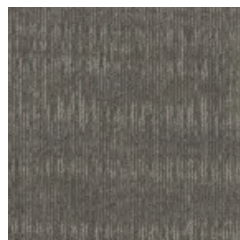
00430 slate



00450 indigo



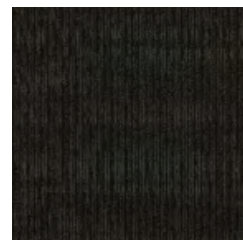
00570 cool grey



00530 silver



00560 warm grey

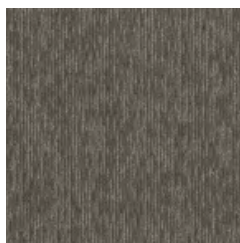


00590 black

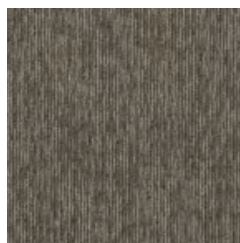
COLORWAYS 10576 | INK



00150 sand



00525 french grey



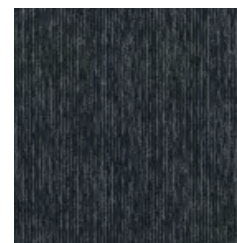
00700 umber



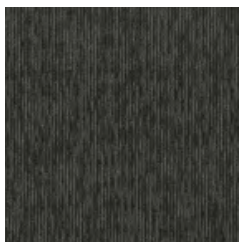
00390 celadon



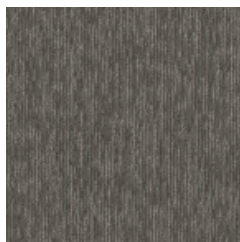
00430 slate



00450 indigo



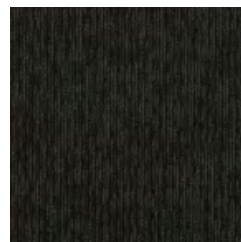
00570 cool grey



00530 silver



00560 warm grey



00590 black

PRODUCT SPECIFICATIONS

ARTFUL & TEXTURED | modular

CHARCOAL

style / I0574

product size	24" x 24" 60.96 cm x 60.96 cm
gauge	1/10 39.37 per 10cm
tufted yarn weight	16 oz./yd ² 542.51 g/m ²
stitches	10.5 per inch 41.34 per 10 cm
fiber type	Eco Solution Q [®] Nylon
backing type	EcoWorx [®] Tile

GRAPHITE

style / I0575

product size	24" x 24" 60.96 cm x 60.96 cm
gauge	1/10 39.37 per 10cm
tufted yarn weight	16 oz./yd ² 542.51 g/m ²
stitches	10.5 per inch 41.34 per 10 cm
fiber type	Eco Solution Q [®] Nylon
backing type	EcoWorx [®] Tile

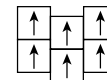
INK

style / I0576

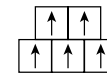
product size	24" x 24" 60.96 cm x 60.96 cm
gauge	1/10 39.37 per 10cm
tufted yarn weight	16 oz./yd ² 542.51 g/m ²
stitches	10.5 per inch 41.34 per 10 cm
fiber type	Eco Solution Q [®] Nylon
backing type	EcoWorx [®] Tile

INSTALLATION METHODS

ASHLAR



BRICK



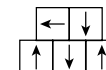
MONOLITHIC



QUARTER
TURN



RANDOM



GRAPHITE in color 570 / CHARCOAL in color 590

installation in brick and random

For full specifications and color, please [visit this collection on the website.](#)